

NT Server Backup

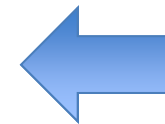
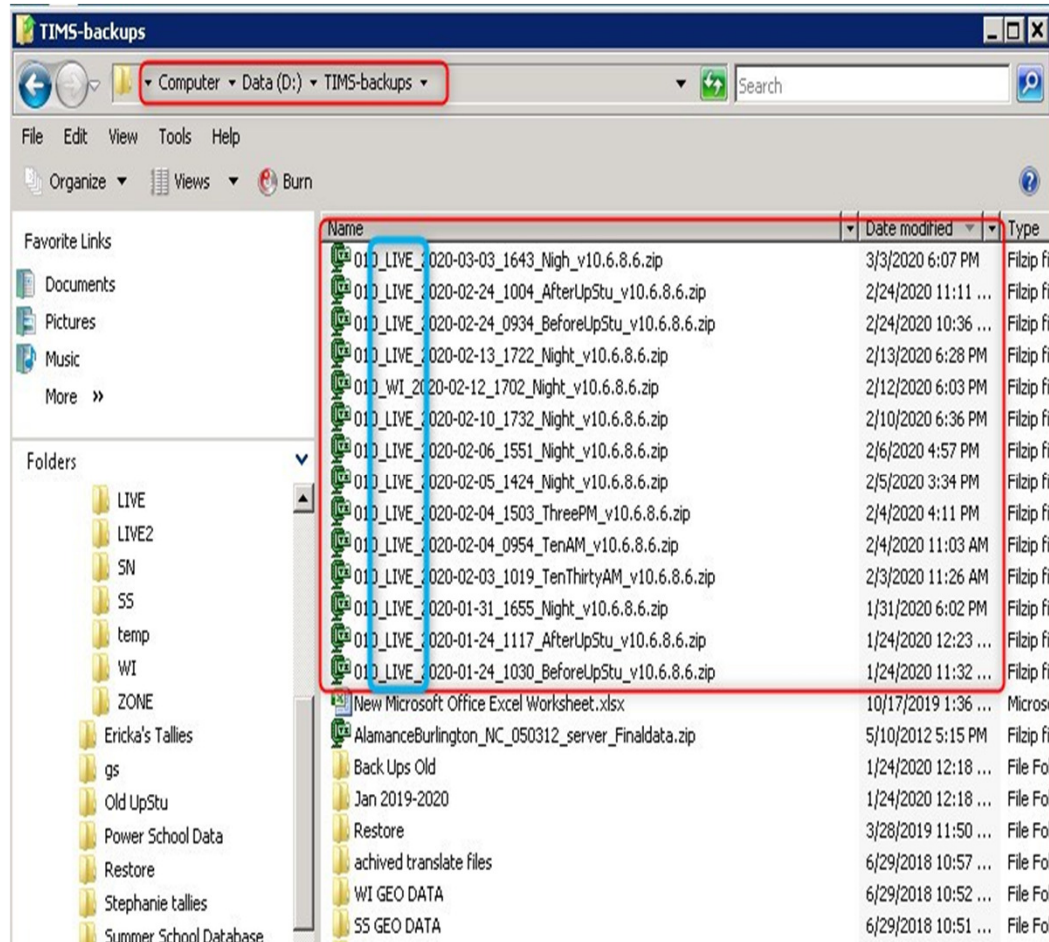
NT Server Backup

Create a backup as normal. Once the backup is finished you can copy the file and place it on a flash drive.

NT Server Backup



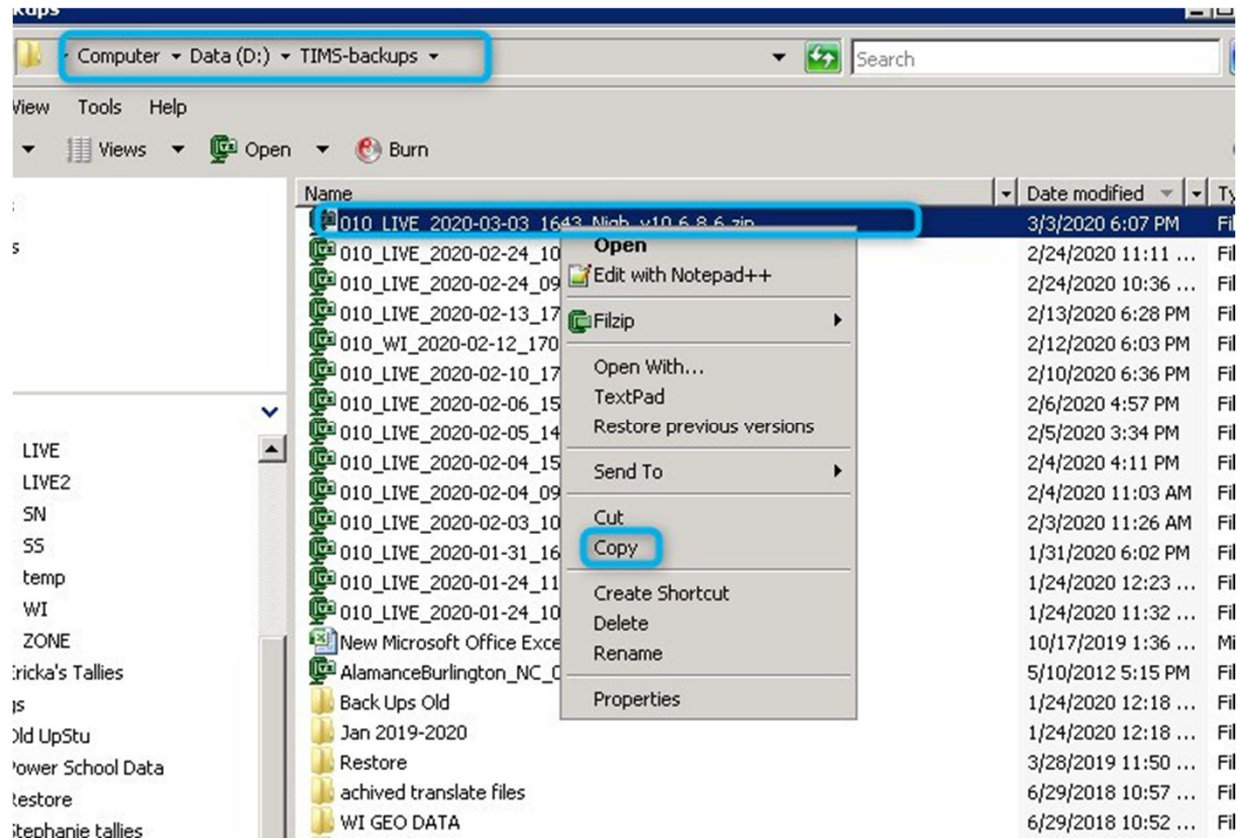
Path where your backup is stored
D:\TIMS-Backups\\(FileName)



Backup Files

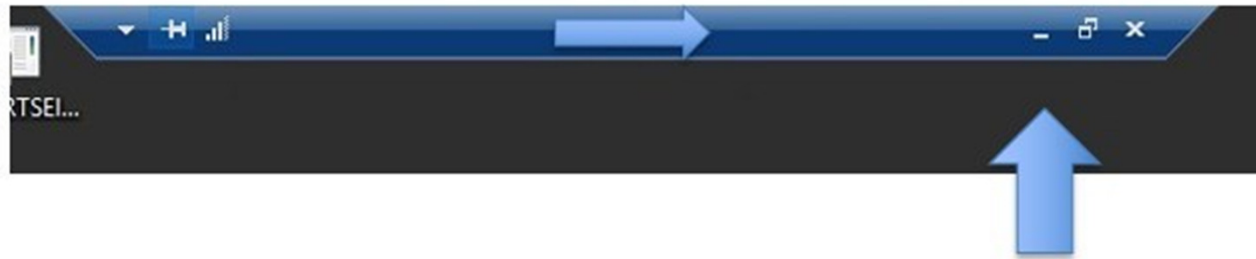
Note you can have multiple datasets stored here: In this folder it has LIVE and WI.

NT Server Backup



Select your file and right click
and copy

NT Server Backup



Minimize blue bar at the top of your screen and paste back to your regular desktop/office computer. You can then paste the file to a flash drive.